

SCHEDULE OF AIR HANDLING UNITS

UNIT NO	SERVICE	FAN DATA				MOTOR DATA			COOLING COIL DATA				HEATING DATA				MFGR. - MODEL	CONTROL TYPE	REMARKS						
		CAPACITY (CFM)	SUMMER RA (GPM)	NUMBER & SIZE	MAX OUT VEL (FPM)	ENT. S.F. IN. W.G.	H.P.	R.P.M.	VOLTAGE	K.W. SENS. BTU/HR.	RM. TOTAL BTU/HR.	PA. SENS. BTU/HR.	FA. LAT. BTU/HR.	TOTAL SENS. BTU/HR.	TOTAL HT. BTU/HR.	G.P.M.				EM. YEARS BTU/HR.	PA. SENS. BTU/HR.	FA. LAT. BTU/HR.	TOTAL SENS. BTU/HR.	TOTAL HT. BTU/HR.	G.P.M.
AH-T-1	SOUTH EXT. ZONE	4500	185	1, 15"	1700	0.90	5	1750	460/360	179,200	99,300	-7,900	400	1100	83,700	92,900	9.5	60,000	16,000	370	82,000	5	TRANE #10 VERT.	B	3 UNITS REQUIRED
AH-T-2	WEST EXT. ZONE	8300	515	2, 15"	1700	1.00	7 1/2			179,280	183,420	-14,230	1100	2900	169,150	173,200	17.5	122,100	44,500	1030	169,600	8	TRANE #21 VERT.	B	3 UNITS REQUIRED
AH-T-3	INTERIOR ZONE	11,500	875	2, 16.5"		1.05	10			248,400	260,100	-19,700	2050	5475	230,750	253,900	25.5				124,000	6	TRANE #25 VERT.	ΔC	3 UNITS REQUIRED
AH-T-4	NORTH EAST EXT. ZONE	10,500	375	2, 16.5"		1.25	10			226,800	233,000	-18,000	800	2200	209,600	218,000	2.2	SEE REHEAT COIL	750	SCHEDULE			TRANE #25 VERT.	ΔD	3 UNITS REQUIRED
AH-T-5	WEST EXT. ZONE	10,000	515	2, 15"		1.06	10			216,000	220,140	-17,150	1100	2900	199,150	206,200	21	122,100	44,500	1030	166,600	8	TRANE #21 VERT.	B	1 UNIT REQUIRED

NOTE: COIL CAPACITY TO BE BASED ON 40°F - 60°F WATER

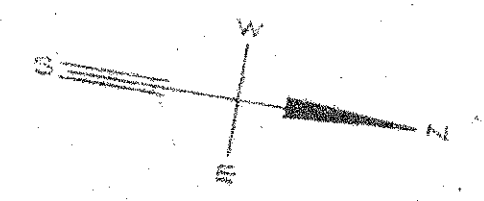
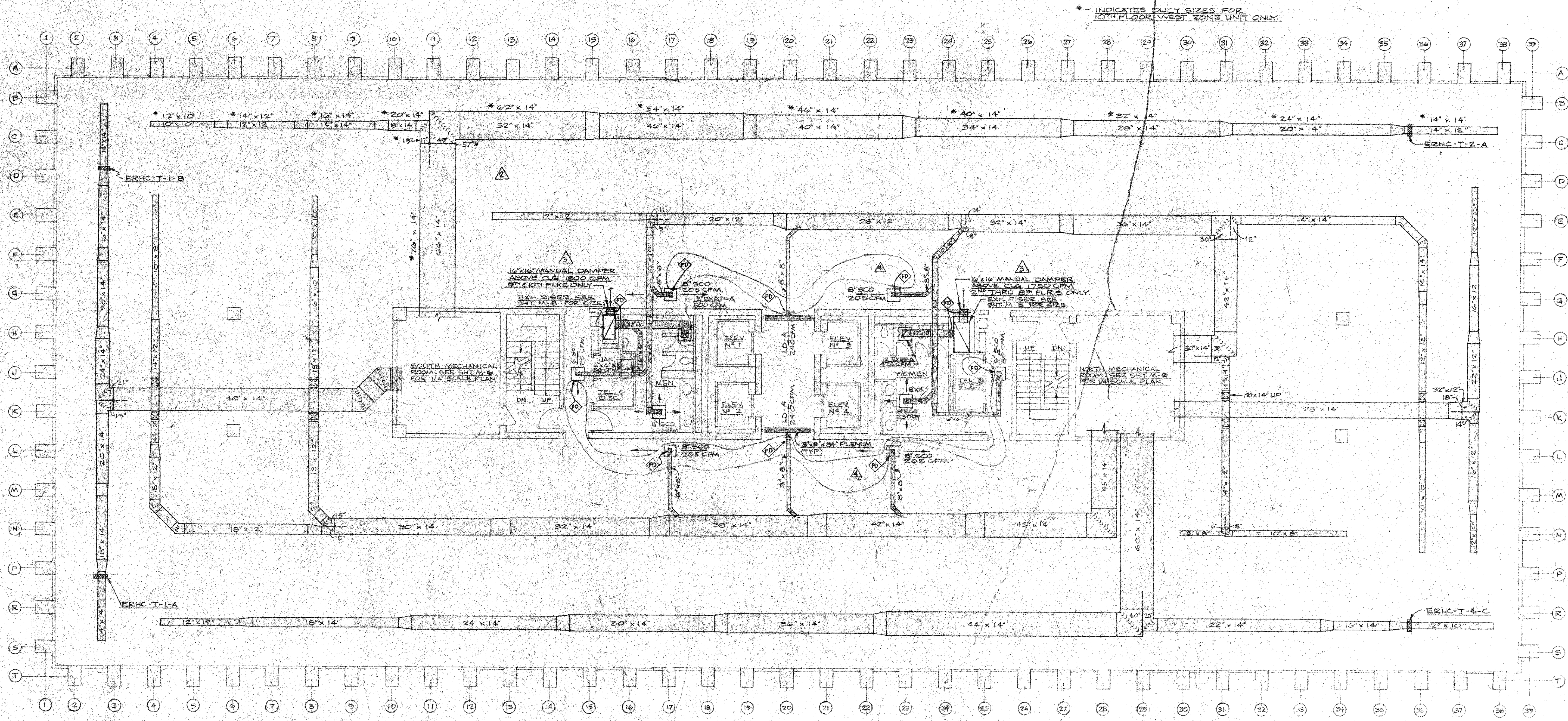
SCHEDULE OF HOT WATER REHEAT COILS

COIL NO.	SERVICE	TOTAL AIR VOL. CFM	CAPACITY BTU/HR.	ENT. AIR TEMP. F°	WATER G.P.M.	MAX. FACE VEL. FPM	MAX. H <sub>2</sub> O VEL. FPM	MAX. ΔP H <sub>2</sub> O	MAX. ΔP AIR	REMARKS
RHC-T-4-A	EAST EXTERIOR ZONE	7500	145,000		5	700				530 CFM F.A.
RHC-T-4-B	NORTH EXTERIOR ZONE	3000	45,000		3	700				220 CFM F.A.

NOTE: COIL CAPACITY TO BE BASED ON 200°F - 160°F WATER

SCHEDULE OF ELECTRIC REHEAT COILS

HEATER NO.	SERVICE	SIZE W. X H.	CFM	TOTAL HT. BTU/HR.	K.W.	VOLTAGE	PHASE	CONTROLLER	REMARKS
ERHC-T-1-A	SOUTH-EAST CORNER	14" x 14"	1200	17,000	5	277	1		2 STEP CONTROL
ERHC-T-1-B	SOUTH-WEST CORNER	14" x 14"	1100	17,000	5	277	1		2 STEP CONTROL
ERHC-T-2-A	NORTH-WEST CORNER	14" x 14"	780	10,240	3	277	1		1 STEP CONTROL
ERHC-T-4-C	NORTH-EAST CORNER	12" x 10"	590	13,650	4	277	1		2 STEP CONTROL



SECOND THROUGH TENTH - 1/8" SCALE